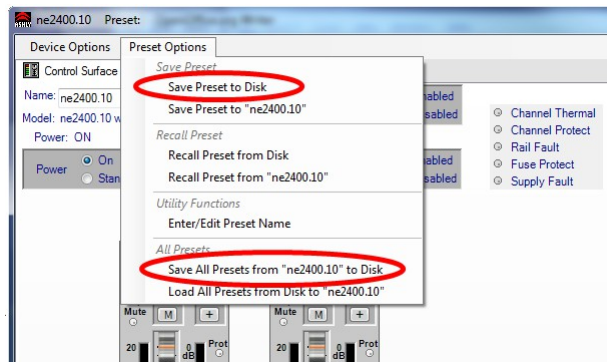


## Full Backup Procedure

Ashly Audio strongly recommends a full backup of the device be made prior to applying a firmware update. Although problems during firmware updates are rare, having a full backup ensures you'll be able to recover if necessary.

### *Amplifiers and Signal Processors*

To make a full backup of amplifier and signal processing devices, use the “Preset Options” menu for the device and select “Save Preset to Disk” and “Save All Presets...to Disk” options. The “Save Preset to Disk” saves the working settings. The “Save All Presets...” saves the presets stored in flash.



### *Remotes*

To make a full backup of remote devices, use the “Device Options” menu for the device and select “Save Settings to Disk”.

