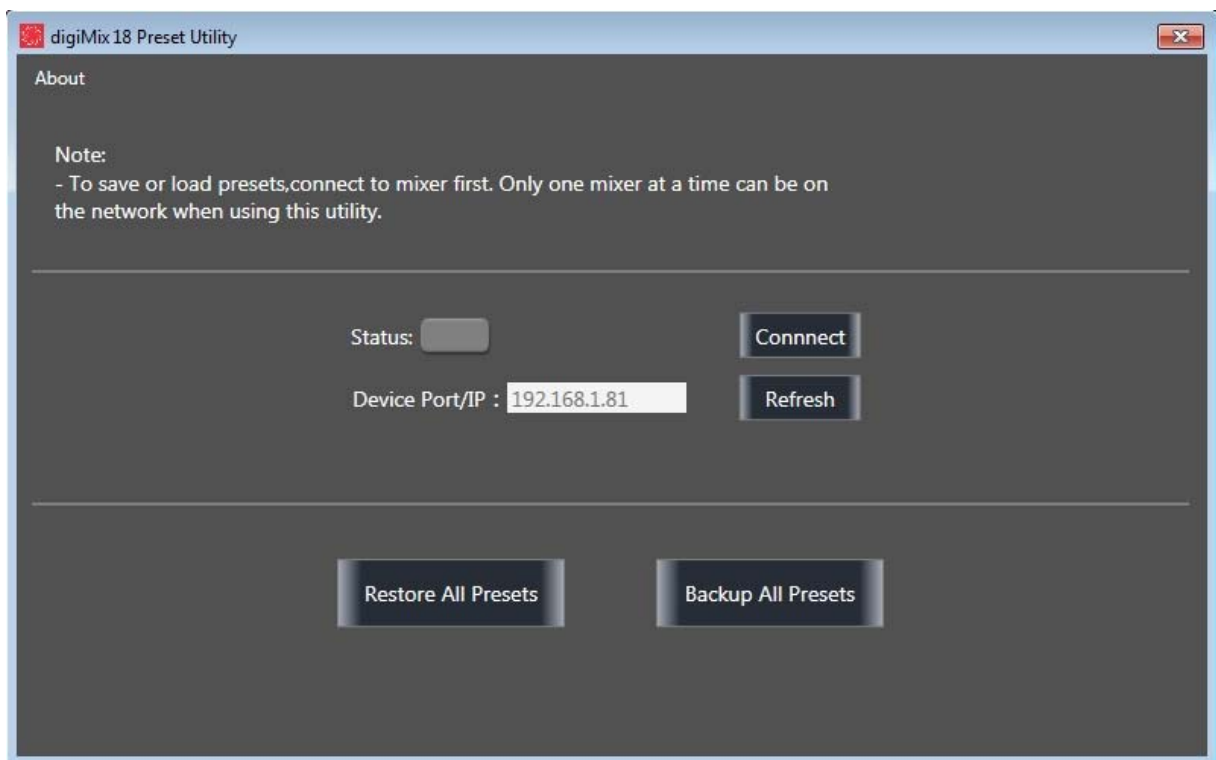


## Please read carefully before updating digiMIX firmware

### 1) Backup Your Presets

A firmware update will erase all presets stored on the mixer. If you want to save your mixer presets prior to firmware update, you must first use the separate Preset Utility to back them all up to a PC or Mac.

- a. Download and install the digiMIX18 or digiMIX24 Preset Utility from the Ashly website.
- b. Connect your digiMIX to a PC or Mac with a USB printer cable or Ethernet connection.
- c. Launch the digiMIX Preset Utility. You will see this screen prompting you to connect:



- d. Press the <Connect> button. *Note: Only one digiMIX mixer can be connected at a time.*
- e. The Status box will turn green when the mixer is connected and ready for preset backup.
- f. Press <Backup All Presets>. The backup process takes up to two minutes.
- g. To restore backed up presets later, repeat this process and press <Restore All Presets>.

### 2) Is Dante or USB option installed?

If your digiMIX mixer has the optional Dante or USB module installed, the module must be removed before running the firmware update utility. See the digiMIX owner's manual for installation/removal instructions. *Note: It is not necessary to remove Dante or USB modules if you are only running the Preset Utility.*

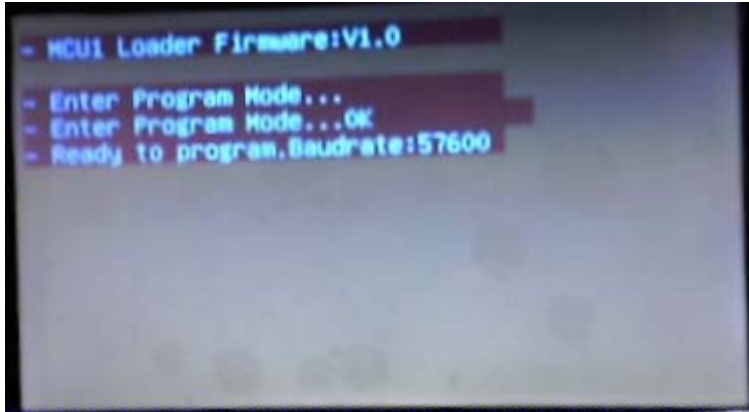
### 3) Firmware Update Procedure

**a. Download and install digiMIX24 or digiMIX18 Firmware Utility** (WIN or MAC) from the Ashly website.

*Mac Users: To open the app for the first time, simply Control+Click on the app in the Finder, then select "Open." You'll see a new popup asking if you're sure you want to run the app on your MAC. Just hit "Open" again and you're set.*

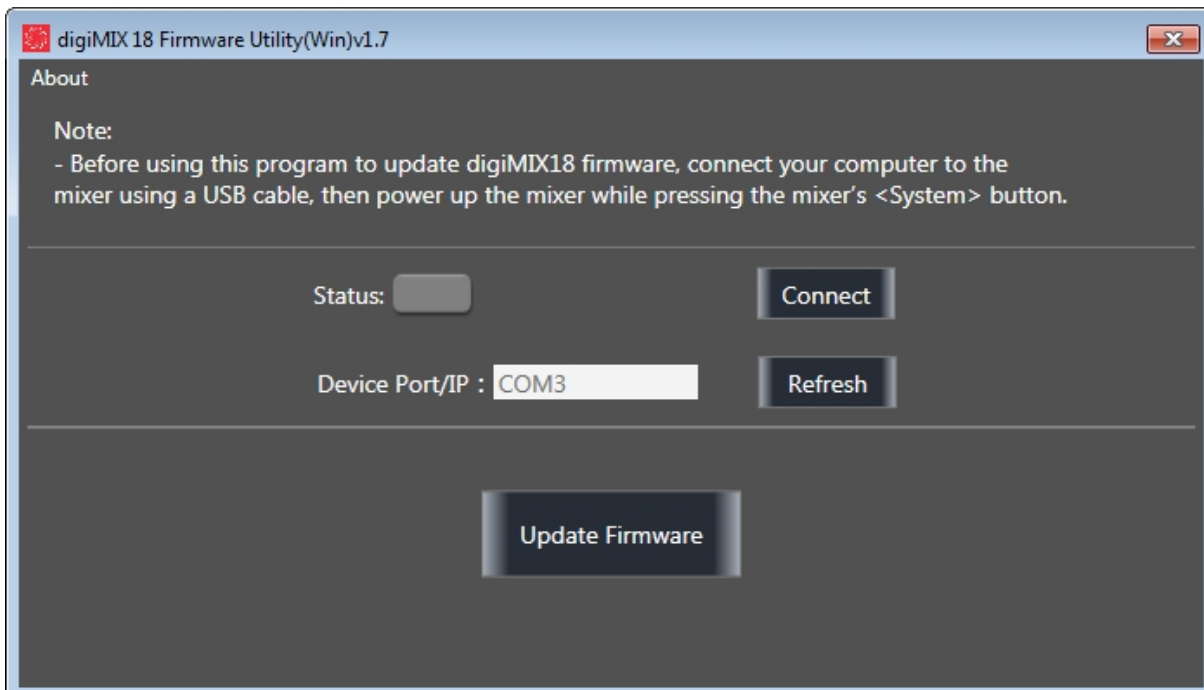
**b. Connect your dixiMIX to your computer.** Ashly strongly recommends using only a USB printer cable to connect the mixer and computer for firmware update. If an Ethernet connection is used, any network interruption or data glitch during the firmware update process could render the mixer inoperable and require factory service.

**c. Turn on the mixer while pressing and holding down the <System> button.** The following image will appear on the mixer's touchscreen, indicating it is ready for firmware update:

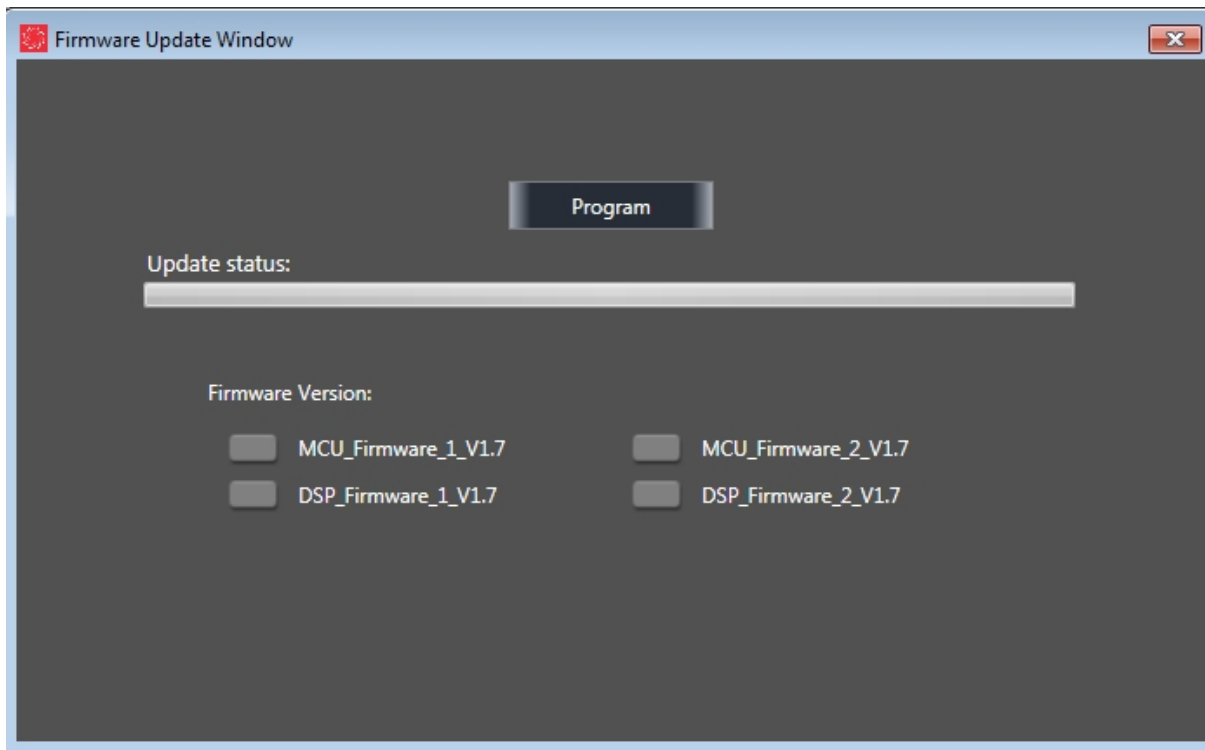


**d. Launch the Firmware Utility** on your computer.

**e. Connect the Firmware Utility to your mixer:** The following screen appears on your computer. Press the <Connect> button on this screen. The Status button will turn green when properly connected, meaning that all is ready for firmware update. Press the <Update Firmware> button to proceed.



**f. Begin Firmware Update:** The following screen appears. Press the <Program> button, which will then ask you if you are sure you want to proceed, and remind you that all internal mixer information (including presets) will be permanently erased. If sure, click <Yes> to update your mixer firmware. **Once this process begins, do not interrupt data or turn off mixer power until firmware update is complete.** The firmware update process takes about five minutes.



### **Ashly digiMIX18 and Ashly digiMIX24 iPad® Apps**

Ashly digiMIX18 and Ashly digiMIX24 Apps for iPad are available on the App Store for free download. *Ashly digiMIX24 mixers must be updated to firmware revision 4.7 or higher to work properly with iPad app v5.05 or higher.*