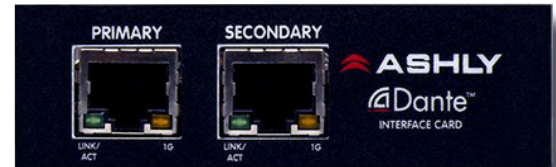




Integrating Ashly Products With Dante Network Audio

What Is Dante?

Dante™, created by [Audinate](#), is a digital A/V transport technology that uses 100MB or 1GB Ethernet for low latency delivery of uncompressed, high channel count audio over a single, standard IP network. The same network is used for Dante audio streaming and Ethernet control. This publication is limited to using Dante with Ashly products. For general questions about Dante system design or networking, please visit the Audinate website [here](#).



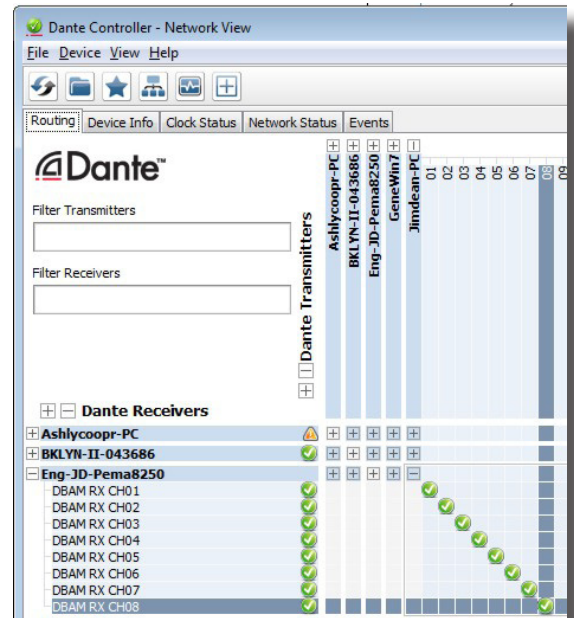
Ashly Dante Interface

How Do I Get Dante On Ashly Products?

All Ashly products with network audio capability can be integrated into a Dante system by purchasing an OPTDante module from Ashly as a factory pre-installed option. Compatible models include nXe, nXp, Pema, two-channel and multi-channel NE amplifiers, and NE4400, NE4800, and NE8800 processors. The OPTDante module enables the Ashly device to receive Dante audio streams from any Dante source on the network. The NE4400, NE4800, and NE8800 can also be set up as Dante transmitters, providing a Dante audio source for other devices.

What Is Dante Controller and Why Do I Need It?

Configuration of Dante audio requires the use of Dante Controller software (shown at right), available free from Audinate. Dante Controller scans and manages the network for all Dante devices. Connect individual transmitter channels with receiver channels by using the simple matrix, clicking on desired intersect points.



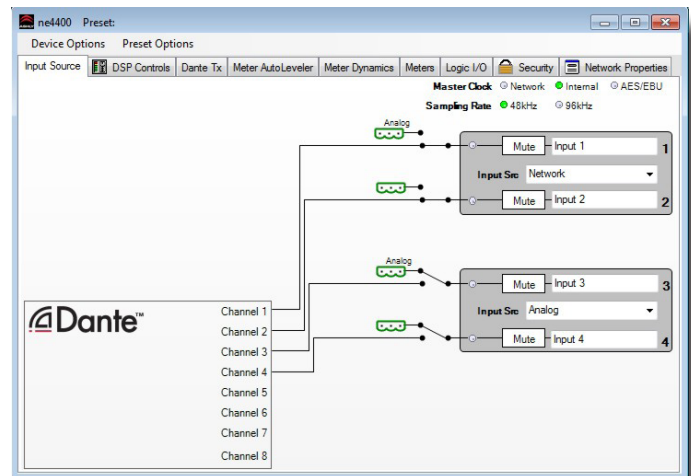
Dante Controller

Dante Controller also allows you to edit device names and channel labels, control sample rates, set device latencies, view and manage network properties, etc. Once the network is configured, the PC running Dante Controller can be removed from the network. Dante devices will safely retain all settings. For further description of Dante Controller or to download the program, visit the Audinate website [here](#).

How Do I Route Dante To My Ashly Device?

To route Dante inputs to your Ashly product, first use the Dante Controller matrix to assign Dante transmitter channels to Ashly device receiver channels as shown in the previous section. Note that Dante *receiver* channel numbers will always correspond directly to Ashly device input channel numbers.

Next, use Protea^{ne} software to open the Ashly device assigned in Dante Controller. Click on its <Input Source> tab, then select <Network> input source for each channel pair using Dante (shown at right). This routes the transmitter channels assigned in the Dante Controller matrix to the Ashly device inputs. It also disables the analog input to those channels. There is no automatic backup (failover) to the analog input source option with Dante. If the input source is selected to <network>, only Dante signals can pass. If the input source is selected to anything other than <network>, Dante will not work for that channel pair, even if it has been assigned in the matrix.



Protea^{ne} Software Input Source Selection with Dante

How Do I Route Ashly Outputs To Dante?

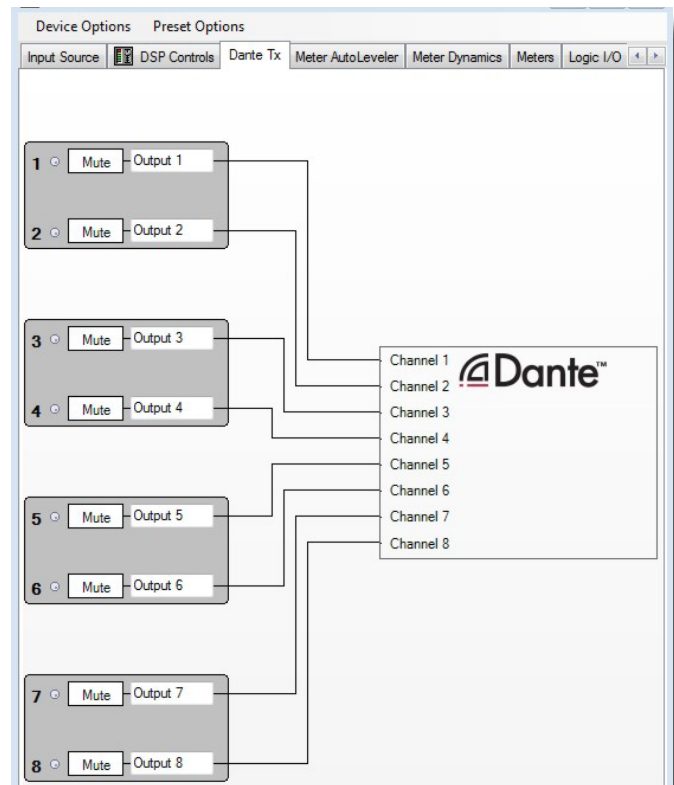
Only the Ashly NE4400, NE4800, and NE8800 processors can be used as a Dante signal source, or transmitter (shown at right). With Dante installed, the Ashly device and its output channels will be automatically streamed out to the network and added to the available selection of Dante transmitters. Note that the signal, name, and mute status of analog outputs will always be the same as the signal, name, and mute status of the Dante Tx outputs for that channel.

What is the Dante Virtual Soundcard?

Dante Virtual Soundcard, or DVS, (shown below at right) is an inexpensive software application available from Audinate. DVS turns your computer into a Dante-powered workstation, seamlessly integrating your PC or Mac with Dante audio devices on your network. Instantly connect to record, process and playout using any audio application and any combination of Dante-enabled devices. For further information on using the Dante Virtual Soundcard, or to purchase from Audinate, visit [here](#).

Can I Use EEE (Energy Efficient Ethernet) Switches In My Dante Network?

Some Ethernet switches use EEE, sometimes known as IEEE 802.3az or “Green Ethernet”. This is a power saving technology used during times of low network traffic, but can cause interrupted or poor Dante performance. If you are using managed network switches, make sure they allow EEE to be disabled, and make sure EEE is disabled on all ports used for real time Dante traffic. If you are using unmanaged switches, do not use Ethernet switches that support EEE function because you cannot disable EEE operation in those switches. Bottom line, any Ethernet switch should have energy-savings features disabled for use with Dante, described further [here](#).



Protea^{ne} Software Dante Tx Tab (transmit)



Dante Virtual Soundcard

ASHLY AUDIO INC. 847 Holt Road Webster, NY 14580-9103, USA

Phone: (585) 872-0010 Fax: (585) 872-0739 Toll Free (800) 828-6308 www.ashly.com

© 2015 by Ashly Audio Corporation. All rights reserved worldwide. Ashly Audio is a division of Jam Industries, Ltd. All features, specifications, and graphical representations are subject to change or improvement without notice.