

Mic Preamp

Software Applications

May 2013

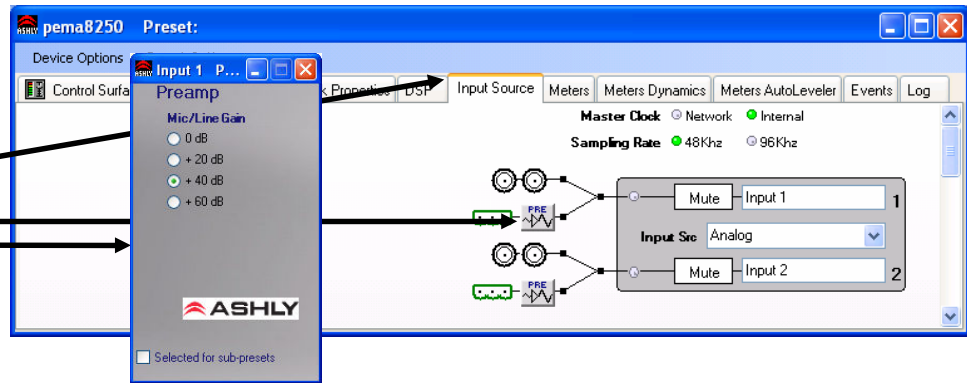
The Preamp Block is a fixed block (cannot be inserted or deleted) that allows the user to apply analog gain to the signal chain. This is the first block in the signal Chain possibly showing up on the input source page for some products. On some products, this is an optional card, and will only appear if the microphone preamps are installed.

Please see the Protea Software Suite "Help > Contents and Index" for additional details.

Pema Series (all models):

The mic pre-amp is located under the "Input Source" tab.

A left click on the "PRE" box opens the Preamp window.

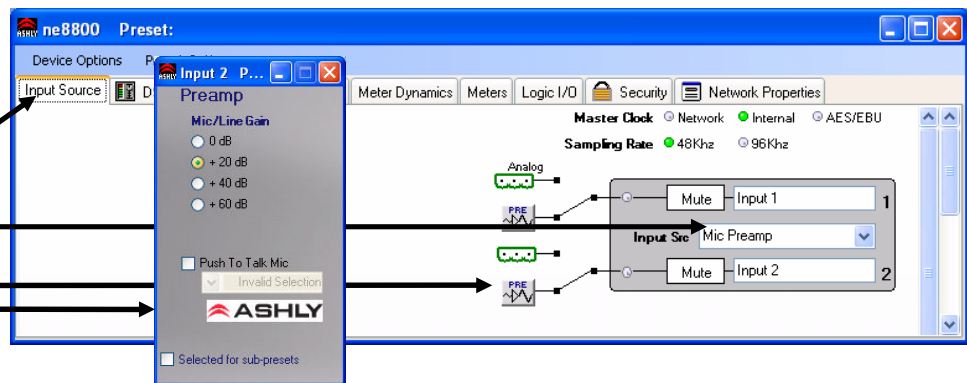


ne4400m, ne4800m, ne8800m, ne4250pem, ne8250pem:

The mic pre-amp gain is located under the "Input Source" tab.

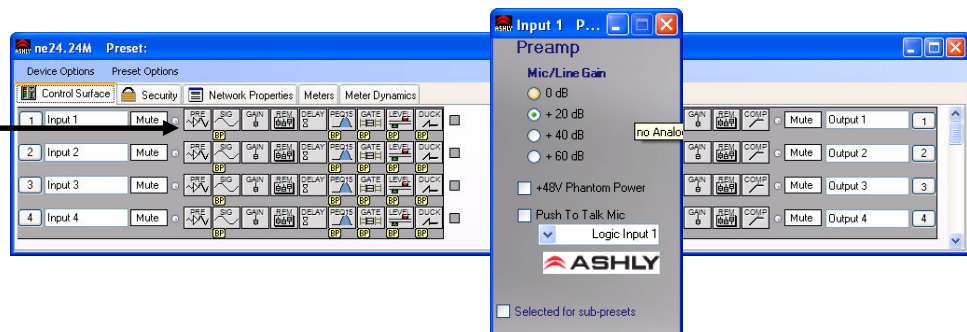
Select Mic Preamp

A left click on the "PRE" box opens the Preamp window.



ne24.24M

A left click on the "PRE" box opens the Preamp window.



Visit www.ashly.com to download Protea NE software and data sheets