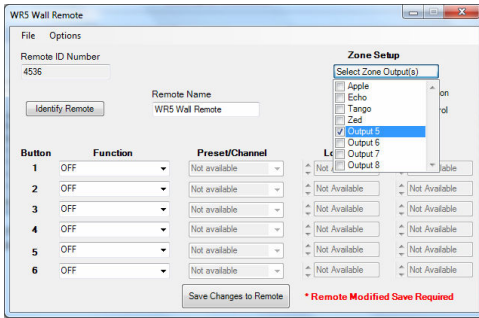
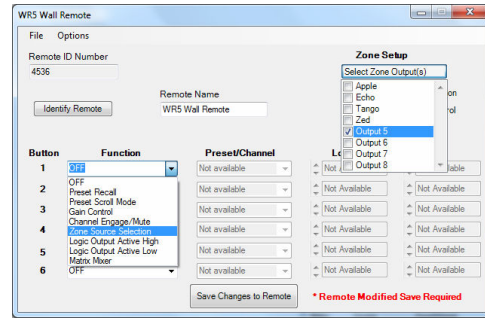


Zone Source Selection

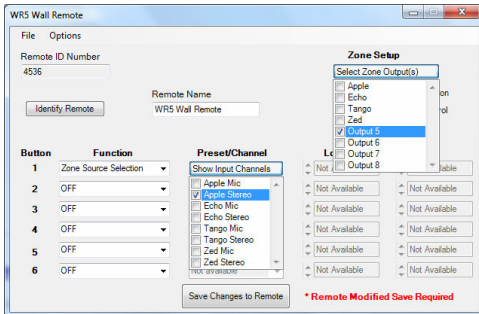
Creating and controlling sound systems has been simplified with Ashly's **Protea Software Suite**. NE-Series processors, NE-Series power amplifiers with (pe) option, Pema Series, and nXp-Series power amplifiers offer DSP inputs, outputs and matrix mixer. A (ne)WR-5 wall-remote can directly control the matrix mixer on a single output without affecting other outputs. Standard 10/100 Ethernet protocol and Ashly's Protea Software Suite offers ease of use, setup and control.



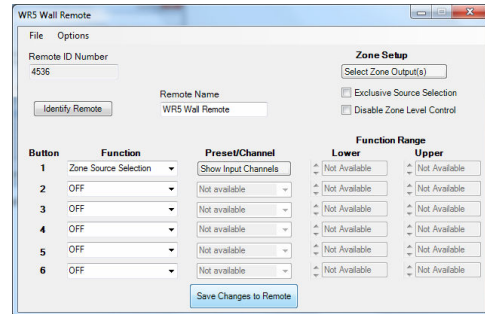
Select the output(s) to be controlled; This could be a meeting room, patio area, common area, etc.



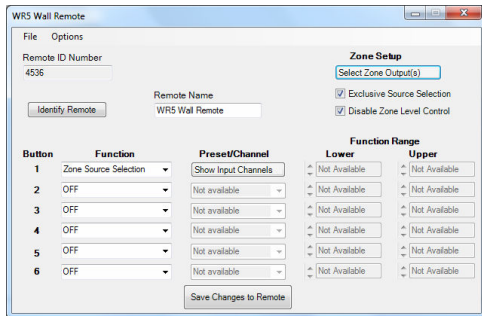
Assign "Zone Source Selection" to a select button;



Assign one or more inputs (sources) to the select button;



Save Changes to Remote!



The standard Zone Setup lets the user select (green) or unselect Zone Sources. Level control (up-down buttons) is active when a source is selected.

"Exclusive Source Selection" will select one source and mute all others. "Disable Zone Level Control" will not allow the user to make level changes.

Visit www.ashly.com to download Protea NE software and data sheets