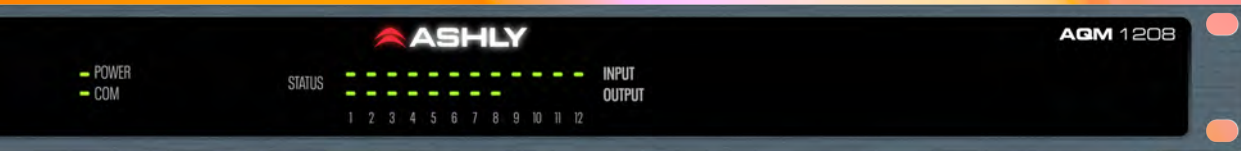
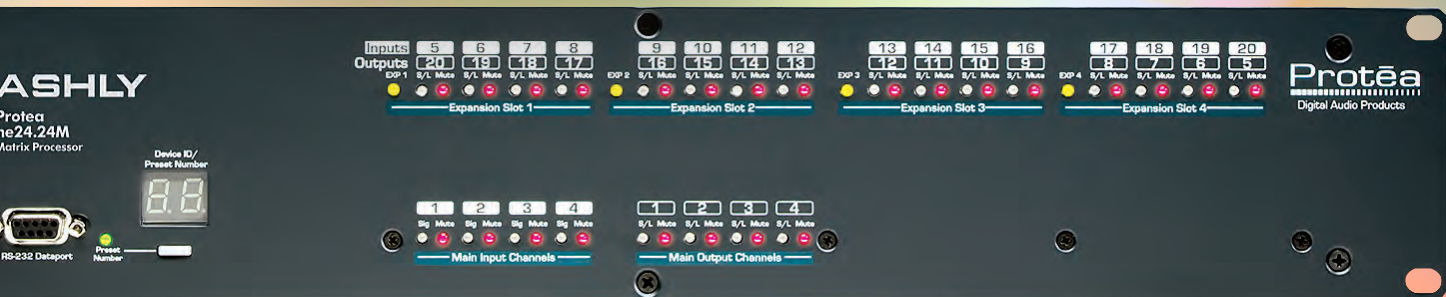


OUR MISSION...

BUILD THE BEST PROCESSORS MADE TODAY



AQM 1208
mXa 1502
AquaTouch 7
Protea NE 24.24m



AQM 1208

Matrix Zone Mixer

NEW!



The AQM1208 represents the next phase in the Ashly AquaControl DSP Lineup. Designed as an advanced, stand-alone zone mixer to be used with external amplification, the AQM1208 offers the power & flexibility needed to handle just about any application.

- Intuitive AquaControl™ Software
- Remote Access Anywhere in the World
- Mic & Multi-Zone Ready



The AQM1208 features Ashly's AquaControl™ web-server based interface, which runs virtually on any networked PC or mobile device, any OS

With the highly intuitive AquaControl browser-based UI as a start, the AQM1208 allows control and monitoring from anywhere on the web (no cloud account needed) to ensure everything always sounds great and runs smoothly. Its 12 x 8 IO compliment and powerful DSP toolbox are capable of handling a wide range of projects, from mic-centric applications like HoW, school productions & courtrooms to multi-zone BGM distribution and paging situations. The AQM-1208 is always ready to deliver.

AquaTouch 7

Touch Remote

NEW!



A new addition to the AquaControl family is the AquaTouch7 Remote. This 7" color touch-panel provides secure remote control access via Ethernet with wall-mount installation.

The AquaTouch7 Remote is the perfect compliment to AquaControl products like the AQM1208 & mXa1502.

Offering convenient and intuitive touch-control of all remote functions, the AquaTouch7 uses a wired Ethernet connection to its host device, providing reliable and secure access.

The AquaTouch7 is designed to be flush wall-mounted. PoE compatibility makes installation fast and simple.

- AquaControl Compatible
- Secure Touchscreen Control
- Wall or Desk Mountable

mXa 1502

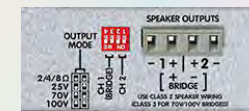
Digital Mixer Amplifier



- The ultimate ONE-BOX Solution
- Designed for Most Applications
- AquaControl™ Software

4-Zone DSP Mixer Amplifier with AquaControl™ Software. The Ultimate "One-Box" Solution

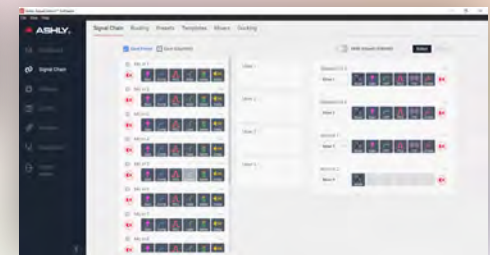
The mXa-1502 with AquaControl™ software gives your customers multi-zone music distribution, paging, sound-masking and automatic mixing for a wide-range of environments. Process 16 audio inputs into four different areas with a single rack space device that includes two Ashly-reliable 150-watt amplifiers capable of driving 2,4 and 8-ohm as well as 25, 70 and 100V loads.



Mix and match speakers loads as needed

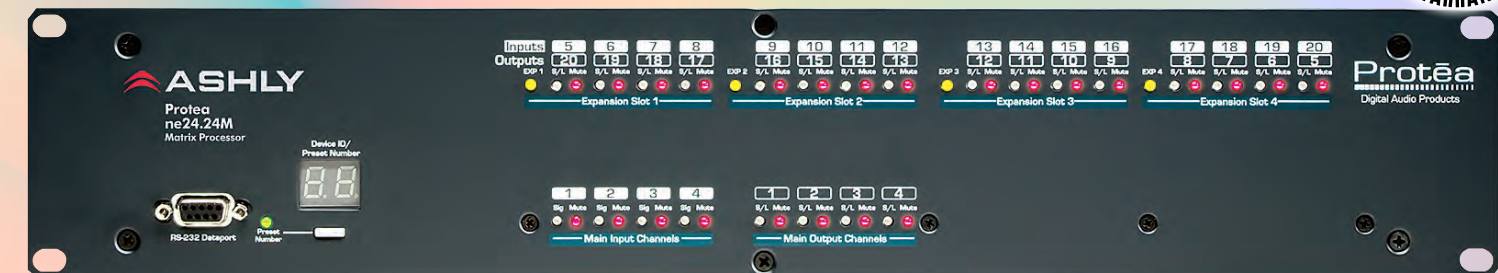


Four output channels with full DSP with advanced zone and speaker system processing.



NE 24.24m

Matrix Processor



The ne24.24m is built on our intuitive Protea software platform, all the essential DAP tools for most common applications, in a modular and user-expandable chassis, designed to be really simple to use.

- Modular Card-based Architecture
- Up to 24 I/O Channels
- Intuitive & Flexible Protea DSP

The ne24.24m is the most popular Ashly product sold. Period. And with good reason-Its ease-of-use, expandability (up to 24 channels) and flexibility make it a clear choice for DSP users the world over. Discover the ne24.24m and why it shouldn't require taking a college course to get up and running with advanced DSP.

SPECIFICATIONS

AQM1208 Matrix Zone Mixer [PRELIMINARY]

I/O Configuration	12 Balanced Mic/Line Inputs + 4 summed RCA unbalanced Line Inputs (on ch 9-12) x 8 Line Outputs
DSP	Block Assignable (6 each on input & Outputs), including: Gain, Remote Gain, DCA Gain, Compressor, Leveler, Brick Wall Limiter, 10-band PEQ, 31-band GEQ, HPF, LPF, Delay, 2,3,4-way X-Over, FIR Filters, Ambient Noise Compensation, Ducker, Auto-Mix, Meter, Signal Generator
Control	Ethernet 100/1000BaseT, VC (3), GPI/O (8/2)
Software	AquaControl™ Integrated web-server, browser access
S/N Ratio	>110dB (20Hz-20kHz)"
THD+N (typical)	< 0.05% (20 Hz - 20 kHz)
Frequency Resp.	20Hz-20kHz, ±0.05dB
Digital Performance	24bit/48kHz
Options	Remote controls: WR-1, WR-1.1, WR-2, WR-1.5, AquaTouch7
Dimensions	19"W x 1.75"H x 14.54"D (483mm x 45mm x 369mm)
Weight	8.0 lbs 3.63 kg)

mXa1502 Digital Mixer-Amplifier

I/O Configuration	8 Balanced Mic/Line Inputs + 4 Stereo RCA unbalanced Line Inputs x 4 Outputs (2 Powered + 2 AUX)
DSP	Block Assignable (6 each on input & Outputs), including: Gain, Remote Gain, DCA Gain, Compressor, Leveler, Brick Wall Limiter, 10-band PEQ, 31-band GEQ, HPF, LPF, Delay, 2,3,4-way X-Over, FIR Filters, Ambient Noise Compensation, Ducker, Auto-Mix, Meter, Signal Generator
Control	Ethernet 100/1000BaseT, VC (3), GPI/O (8/2)
Software	AquaControl™ Integrated web-server, browser access
S/N Ratio	>99dB (20Hz-20kHz, Gain@26dB)"
THD+N (typical)	< 0.05% (20 Hz - 20 kHz, 8 Ω load, 3 dB below rated power)
Frequency Resp.	20 Hz - 20 kHz (+/- 0.5 dB, 8 Ω load, 3 dB below rated power)
Digital Performance	24bit/48kHz
Options	Remote controls: WR-1, WR-1.1, WR-2, WR-1.5, AquaTouch7
Power Amplifier	2 x 150W @ 2/4/8 Ohms or 25/70/100V (selectable per channel)
Dimensions	19"W x 1.75"H x 14.54"D (483mm x 45mm x 369mm)
Weight	13.0 lbs (5.4 kg)

Ne24.24m DSP Matrix Processor

Model	Varies by configuration
I/O Configuration	Base: 4 Inputs x 4 Outputs, available/expandable up to 24 channel
DSP	Block Assignable (6 each on input & Outputs), including: Gain, Remote Gain, Compressor, Leveler, Gate, 15-band PEQ, HPF, LPF, Delay, Ducker, Meter, Signal Generator
Control	Ethernet 100/1000BaseT, RS-232, VC (8), GPIO (8+)
Software	Protea (PnES) for Windows™
S/N Ratio	> 106 dB (A-weighted, 20 Hz - 20 kHz, 8 Ω load)
THD+N (typical)	< 0.05% (20 Hz - 20 kHz, 8 Ω load, 3 dB below rated power)
Frequency Resp.	20 Hz - 20 kHz (+/- 0.5 dB, 8 Ω load, 3 dB below rated power)
Digital Performance	24bit/48kHz
Options	Cards: 4 x Mic/Line Input, 4 x Line Output, Logic Out (8), AES3. Remote controls: WR-1, WR-1.1, WR-2, WR-1.5, WR-5, neWR-5, FR-8, FR-16, Ashly Remote app
Dimensions	19"L x 3.5"H x 8.5"D (483mm x 89mm x 216mm)
Weight	8.9lbs (4.04kg)

visit ashly.com



SCAN ME

Ashly Audio, Inc. • 847 Holt Road • Webster, NY
USA • US toll-free +1.585.872.0010
Fax +1.585.872.0739 • Sales@Ashly.com

 **ASHLY**®

ashly.com

An **exertis** |  business